



Exhaust Notes

VOLUME 6 NO. 2

FALL 2017

Contents

DEQ Too	1
Testing by the numbers	2
Testing BMWs	3
Ecology Contacts	4

DEQ Too—another option for Oregon motorists



The Oregon Department of Environmental Quality is piloting a new “DEQ TOO” program in response to customer calls for increased convenience.

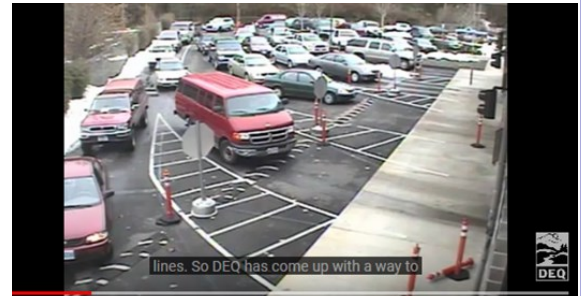
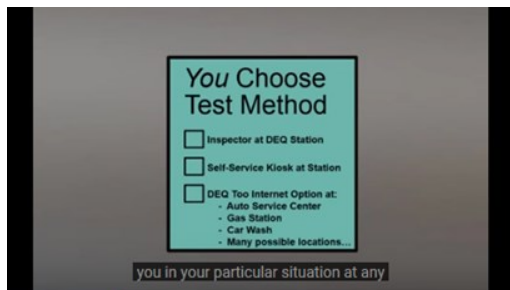
Emission testing in Oregon is limited to 2 high-density population areas. Wait times have been excessively high, and customers have found it challenging to fit a vehicle emission check into their busy lives. Oregon test areas currently have centralized stations and self-service kiosks. Additionally, Oregon DEQ now offers a “plug-and-report” device that will test

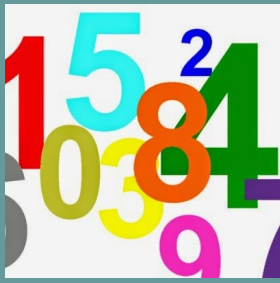
the vehicle and wirelessly report the results to DOL. This testing method is for 2005 and newer vehicles, and the testing can be completed in as little time as it takes for an automated car wash.

DEQ-approved vendors have these devices available for loan or lease. Test results are found on the DEQ website, with directions for ordering tabs if the vehicles pass. Vehicles that fail the test receive a detailed list of on-board diagnostic (OBD) codes, instructions on where to obtain repairs, and next steps toward obtaining tabs.

Verizon is the data management carrier for the program. Several companies have provided testing devices that comply with current blue-tooth technology to transmit data appropriately.

So far Oregon DEQ says this pilot program has gone off without a hitch. There are nearly a dozen states analyzing this program for their own uses, including California and Colorado.





Emission testing by the numbers

Find a trainer

You can find a list of Ecology-authorized trainers and upcoming scheduled trainings at: www.emissiontestwa.com.

Quarterly testing totals

Totals: April through October 2017

Total vehicles tested and waiver numbers are derived from the testing procedures performed in Washington State and are the On Board Diagnostic (OBDII), Two Speed Idle (TSI) and Diesel tests.

The following tables show how many vehicles were tested in April through October 2017. Washington State's contractor, Applus Technologies, Inc. runs the Centralized Facilities. Note that the West Vancouver test station closed in June 2017.

Centralized Facilities	Tests	Waivers
Marysville	27,201	959
Everett	37,388	1372
Lynnwood	37,389	1511
North Seattle	47,093	1673
South Seattle	41,967	1905
Redmond	27,438	802
Bellevue	35,396	1032
Renton	61,892	2741
Auburn	41,453	1945
Fife	37,645	1634
Puyallup	27,440	954
Lakewood	47,313	2306
West Vancouver	8457	207
East Vancouver	70,495	1776
West Spokane	49,779	1432
East Spokane	23,946	559
Total	622,292	22,808

The following table shows the numbers of vehicles tested at Authorized Test Facilities. Note that only Centralized Facilities issue waivers.

Authorized Test Facilities	Tests
Precision Tune-Gig Harbor	2226
Precision Tune-University Place	2113
Precision Tune-Tacoma	547
Precision Tune-Lakewood	282
Auto Repair and Emission-Burien	3426
Lee Johnson Auto-Kirkland	247
Juanita Firs-Juanita	6729
JP Automotive-Burien	227
Great Car Center-Gig Harbor	1794
Midas Car Care-Des Moines	153
Hans VW Repair-Seattle	192
Meineke Car Care-Des Moines	205
CarMax-Spokane	101
Lloyd's Automotive-Burien	324
Glen's Auto Repair-Burien	377
Moose's Auto Tech-Tillicum	183
Total	19,126

Special considerations for testing BMWs



Have you had a BMW turned away from the Emission Test because it failed to connect? The fix may be more simple than you think. You may want to check the diagnostic plug cover. If the cover

was left off, the vehicle cannot connect to the testing equipment because the data link connector (DLC) under the dash is offline.

You will notice in the picture that there are jumper pins to complete the circuit. This was done to ensure that two diagnostic tools could not be used at the same time, as this could potentially harm the components.

If you hook your scan tool to the DLC and do not get a

connection, check this cover. If the cover is off, simply putting it back on may restore the connection.



 Information For
Repair Facilities

Check out
www.emissiontestwa.com for
answers to AES's most
frequently asked questions.



Department of Ecology
Air Quality Program
PO Box 77755
Olympia, WA 98504

Phone: 360-407-6330
Fax: 360-407-0287
E-mail:

melanie.forster@ecy.wa.gov

To request ADA accommodation including materials in a format for the visually impaired, call Melanie Forster at Ecology, 360-407-6330. Persons with impaired hearing may call Washington Relay Service at 711. Persons with speech disability may call TTY at 877-833-6341.

To conserve resources, we provide this newsletter in an electronic-only format. Please consider the environment when printing this newsletter.

Emission Check

You're on the Road to Cleaner Air.

Ecology's Emission Check staff

Clark County

Rachael O'Malley
360-690-7165

rachael.omalley@ecy.wa.gov

King and Snohomish County

David Adler
425-649-7267

david.adler@ecy.wa.gov

John Dillon
425-649-7198

john.dillon@ecy.wa.gov

Barbara Freeman
425-649-4355

barbara.freeman@ecy.wa.gov

Mat Kwartin
425-649-7113

mathew.kwartin@ecy.wa.gov

Kerry Swayne
425-649-7101

kerry.swayne@ecy.wa.gov

Pierce County

Melanie Forster
360-407-6330

melanie.forster@ecy.wa.gov

Fritz Merkl
360-407-6333

fritz.merkl@ecy.wa.gov

Spokane County

Mattias Brischle
509-329-3467

mattias.brischle@ecy.wa.gov